

sinclair

## History

The real beginning of home computing all started with the ZX Spectrum. Introduced by Sir Clive Sinclair

The machine was small, smaller than any laptop available today. It plugged into a standard television set

Sinclair proved that his machine could be a flexible tool. Word Processing, database & spreadsheet applications

Despite Sinclair having to sell Sinclair Research to Amstrad after the dismal sales provided by the Sinclair

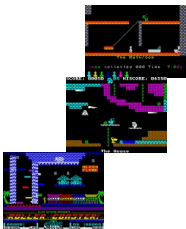


**First ZX Spectrum with  
rubber keys (16k/48k)  
Original box  
Spectrum 128K  
Spectrum +3 with build-in  
3.5" diskdrive**

## Technical Specs

<b>CPU</b>	Zilog Z80A @ 3.54690 MHz
<b>RAM</b>	Depending on the model: 16/48/128 KB
<b>ROM</b>	Depending on the model: 16/32/64 KB
<b>VIDEO</b>	Graphics: 256x192 with 8 colors (but only 2 usable per 8x8 pixel-square)
<b>AUDIO</b>	1 channel mono (via internal speaker) / Spectrum 128K: 3 channel sound (m
<b>EXTERNAL STORAGE</b>	Tapes and Disks

## Screenshots



- ▣ **Jet Set Willy (1984)**
- Monty On The Run (1985)**
- Rollercoaster (1986)**



- Dizzy (1987)**
- Exelon (1987)**
- R-Type (1988)**

## Emulators

ZX Spectrum Emulator  
n/a

 [Download](#)

X128 <http://www.worldofspectrum.org/x128/index.html>

 [Download](#)

PC/Windows emulators

<http://www.worldofspectrum.org/emulators.html#pcwin>

n/a